



RIMMIN'

VOL. VII, NO. 1

SPRING-SUMMER 1992

GRAND CANYON PIONEERS and VILLAGERS

P.O. BOX 1122, FLAGSTAFF, ARIZONA 86002, U.S.A.



December 28, 1991, steam locomotive 3751 does not belie her Santa Fe heritage as she rolls the California Limited into the present for all to enjoy. This Stan Kistler photo was taken north of Barstow, California, near Edwards Air Force Base. Rather see this, or a space shuttle?

“Santa Fe Extra 3751 East,” destination Topeka, Kansas

On May 23, 1942, Santa Fe's daily SCOUT rolled out of Kansas City bound for California. 45½ hours later and 1788 miles on down the line, train #1 pulled into Los Angeles Union Passenger Terminal on time! This particular run emphasized that the Santa Fe Railway was among the first to pioneer long distance steam runs with only the crews being changed—not the locomotive. By the time the Railway had finished with this concept during steam days, they had out-distanced other railroads in the scope and mileage of single engine runs.

This test of Baldwin steam power became standard practice on the Kansas City to L.A. route. As most of Santa Fe's name trains incorporated this idea during the days of steam, their fleet of 4-8-4's, including the 3751, set a record that remains to this day; the longest scheduled passenger run in the world to be handled by a single steam locomotive!

Now exactly 50 years later the historic 3751 will retrace her steps across this great land following the same route she took so many years ago. As a salute to the Santa Fe Railway and its employees, the 3751 is tentatively scheduled to depart Los Angeles on August 30 with an eastbound Santa Fe Employee Recognition Excursion Train.

Operating on a much more leisurely time schedule than that of years gone by, the final destination of the excursion will reach its final destination at Chicago, Illinois. However, the highlight of the trip will be a Labor Day weekend display at Topeka Railroad Days in Topeka, Kansas. Another noted guest invited to this event will be UNION PACIFIC 4-6-6-4 #3985. The route being scheduled is as follows: Los Angeles, Needles, Belen, Amarillo, Wellington, Kansas City, Topeka, Ft. Madison, Chicago and return. Overnight stops are scheduled at these points for water, service and maintenance.

Topeka, now Santa Fe's center of operations for locomotive repair, has promoted Topeka Railroad Days for a number of years, and this year's event promises to be the best yet. U.P.'s good-will ambassador 3985 will be as impressive as ever; but it will be the 3751's return to the plains of Kansas that will highlight this event.

Under the direction and operation of the Santa Fe, the trip will be for the benefit of Santa Fe employees and guests. Next year, 1993, will be the 125th anniversary of the Railway, and Santa Fe intends to use this trip as a “tune-up” for a system-wide celebration next year.

What a thrill to experience 3751 thundering through Flagstaff on the afternoon of August 31. The big 4-8-4 Northern type engines were used by Santa Fe to pull the Grand Canyon Limited and on occasion these mighty Locomotives brought the 20 car (and more) Special trains to the South Rim of Grand Canyon. 3751 returns to northern Arizona on September 15 (see schedule, next page). Plans to meet the special train by G.C.P & V. in Winslow are underway. If interested, let us know.

**"EMPLOYEE RECOGNITION TRAIN"
SCHEDULED SEGMENTS FOR 3751**

<u>DATE / SEGMENT</u>	<u>LOCATION</u>	<u>SEGMENT LEADER</u>	<u>PHONEMAIL</u>	<u>Depart</u>	<u>Arr</u>
08-30 SUN	1 HOBART TO SAN BERNARDINO	Richard Poore	822-4015	(PDT) 800a	1030a
	2 SAN BERNARDINO TO BARSTOW	Bill Webb	822-4143	1130a	145p
	3 BARSTOW TO NEEDLES	Tom Campbell	888-5617	300p	700p
08-31 MON	4 NEEDLES TO SELIGMAN	David Gunther	888-5708	(MDT) 800a	1130a
	5 SELIGMAN TO WINSLOW	Bud Edenfield	822-4144	1215p	330p
	6 WINSLOW TO GALLUP	John Stevenson	822-4140	415p	630p
	7 GALLUP TO BELEN	Mark Brown	922-4132	715p	930p
09-15 TUE	32 BELEN TO GALLUP	Mark Brown	822-4132	(MDT) 800a	1015a
	33 GALLUP TO WINSLOW	John Stevenson	822-4140	1100a	100p
	34 WINSLOW TO SELIGMAN	Bud Edenfield	822-4144	145p	445p
	35 SELIGMAN TO NEEDLES	David Gunther	888-5708	530p	830p
09-16 WED	36 NEEDLES TO BARSTOW	Tom Campbell	888-5617	(PDT) 800a	1145a
	37 BARSTOW -SAN BERNARDINO	Bill Webb	822-4143	1245p	300p
	38 SAN BERNARDINO TO HOBART	Richard Poore	822-4015	345p	600p

**NEW BOOK — RIVER TO RIM
by NANCY BRIAN**

What is in a name? Does it really describe a place? A name identifies a feature and gives us a point of reference. It is human nature to name things. It would seem that we cannot tolerate a prominent place without a name. Place names help us to perceive the world around us and personalize the landscape. Some feel that a name robs the landscape of its character by reducing it to human terms. But, outlandish or weird names help us to grasp the overwhelming nature of the Grand Canyon of the Colorado River.

A newly published place names guide to the Grand Canyon, called *River to Rim* has been written by Nancy Brian. Over 600 place names are listed on a mile-by-mile sequence from Lake Powell to Lake Mead along the Colorado River in Grand Canyon. The goal of this guide is to give a history of the place name. It lists points of interest, tributaries, campsites, recent names used by river runners, as well as physiographic terrains, rock formations, and Indian tribes. Names approved by the United States Board on Geographic Names, synonyms, and previous names are given. When possible, information on who named it, when, and why is also included. Anecdotal information is given to highlight the person or the event and early or other names are listed. All names are indexed and tied to a bibliography of over 200 entries.

The history of Grand Canyon is chronicled with place names that reflect the stories and perceptions of the people who have explored, surveyed, and lived from the Canyon's floor to its rim. The Spanish conquistadores and friars were the first (after the Native peoples) to bestow names fifty years after Columbus arrived in the New World. But it remained until maps were made for place names to be used consistently.

John Wesley Powell endowed the canyon with many romantic and descriptive names during and after his two expeditions in the late 1800s. He adopted many Indian words and named some of the rock layers and cliffs after colors. Several years later, Clarence E. Dutton, in describing the history of the Tertiary age rocks, gave them oriental and religious names. He was fond of architectural metaphor and pinnacles, buttes, and monuments became temples, shrines, thrones, and castles.

This fanciful legacy of heroic nomenclature was carried on from 1903 to 1923 by Francois E. Matthes and Richard T. Evans. They prepared topographic maps of the region and used mythological, classical, and religious names, including those of the Arthurian legends. The surveyors of the 1923 Birdseye Expedition bestowed mileage names to rapids and tributaries from Lee's Ferry to Pearce Ferry. Pioneers, miners, and stockmen brought family and mineral names into common usage. Finally, the Park Service, hikers, and river runners gave names to points along the rim, arches, rapids, and beaches.

You may order River To Rim by contacting Earthquest Press at P.O. Box 1391, Flagstaff, AZ 86002. This quality paperback book has 175 pages and sells for \$14.95 (Arizona residents please add the appropriate county tax) plus \$1.50 for shipping and handling.

Thelma Bartlett

Thelma E. Bartlett, a former employee of Fred Harvey, Inc., at Grand Canyon, died April 10 at her Flagstaff home after a long illness. She was 89.

A memorial service will be conducted at Grand Canyon at a later date.

Mrs. Bartlett was born Dec. 26, 1902, in Nashville, Tenn. In the 1950s, she was a housemother for the Harvey Girls at the canyon.

She is survived by her daughter, Betty L. Bartlett, Flagstaff; a brother, Patrick Ridley, Petersburg, Alaska; and several nieces and nephews.

Flagstaff Mortuary is in charge of arrangements.



Thelma with Pat Snow (N.A.U. Driver) by the Big Bus after a trip with the Elderhostel to Grand Canyon. (Photo taken almost two years ago by B.L.B.)



Col. Walter Dalglish (of Sedona) conducts the Memorial Service quoting the Scottish Devotion below.

In memory of a loving friend and Mother Thelma Bartlett.

Now, this Bell tolling softly for another, saies to me, Thou must die.

PERCHANCE hee for whom this Bell tolls, may bee so ill, as that he knowes not it tolls for him; And perchance I may thinke my seife so much better than I am, as that they who are about mee, and see my state, may have caused it to toll for mee, and I know not that. . . . As therefore the Bell that rings to a Sermon, calls not upon the Preacher onely, but upon the Congregation to come; so this Bell calls us all: but how much more mee, who am brought so neere the doore by this sickness. . . . No man is an Iland, intire of it seife; every man is a peece of the Continent, a part of the maine; if a Clod bee washed away by the Sea, Europe is the lesse, as well as if a Promontorie were, as well as if a Mannor of thy friends, or of thine owne were; Any Mans death diminishes me, because I am involved in Mankinde; And therefore never send to know for whom the bell tolls; It tolls for thee.

(Devotions upon Emergent Occasions, 1624,

This is by John Donne, Scottish minister of the Gospel c. 1624 and thinking it appropriate I pasted it to the card - Walter

The Memorial Service (IN REMEMBRANCE) had been scheduled for May 19, at Shoshonne Point...but owing to a cloudburst, and thanks to the National Park Service..it was moved inside to the all-purpose room of the SHRINE OF THE AGES. Special and very loving presentations were given by Col. Dalglish, Elinor Kyte, Carma and Stan Beus, Bonnie Schaper, and Thelma's daughter Betty.

Sincere thanks

To so many wonderful folks at Grand Canyon Flagstaff - etc. - all for your thoughts and deeds. Betty B.

Elinor Kyte and Frances Taylor prepare the Refreshments.



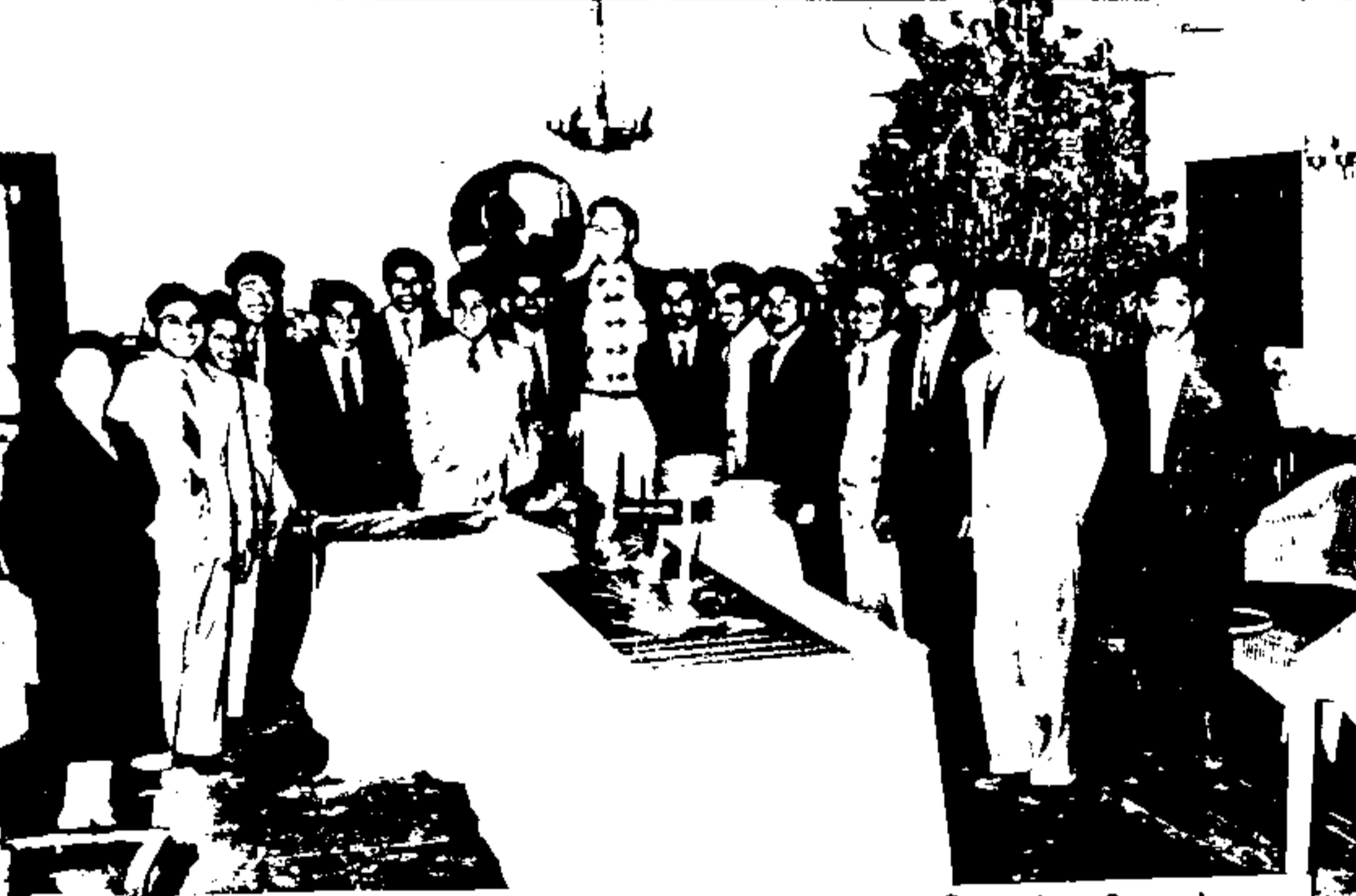
Remember 1919 -



BETTY & THELMA BARTLETT by the BIG fireplace at Hermits Rest, Thanksgiving 1953



Thelma and a Harvey Girl ham it up. Left of the photo is the Indian Dorm and the Hotel garden.



Thelma entertains a group of students from Indonesia at the Girls Dorm. 1954 Christmastime. (Photo by B.L.B.)



Thelma prepares one of her special Cookouts at Shoshonne Point. She became famous for these outdoor affairs which were prepared for employees and friends of Grand Canyon Village. (Photo by B.L.B.)

Thelma's special talents. Plants and Gardening. Photo by B.L.B. taken in back of the Teacherage, late 1950's.



Thelma's prize gifts. The basket from Emilie Komalestewa (who made it) and the special Kachina Doll made by Bruce Timecne. She was also given the Hopi blessing. (The doll is 12" high)



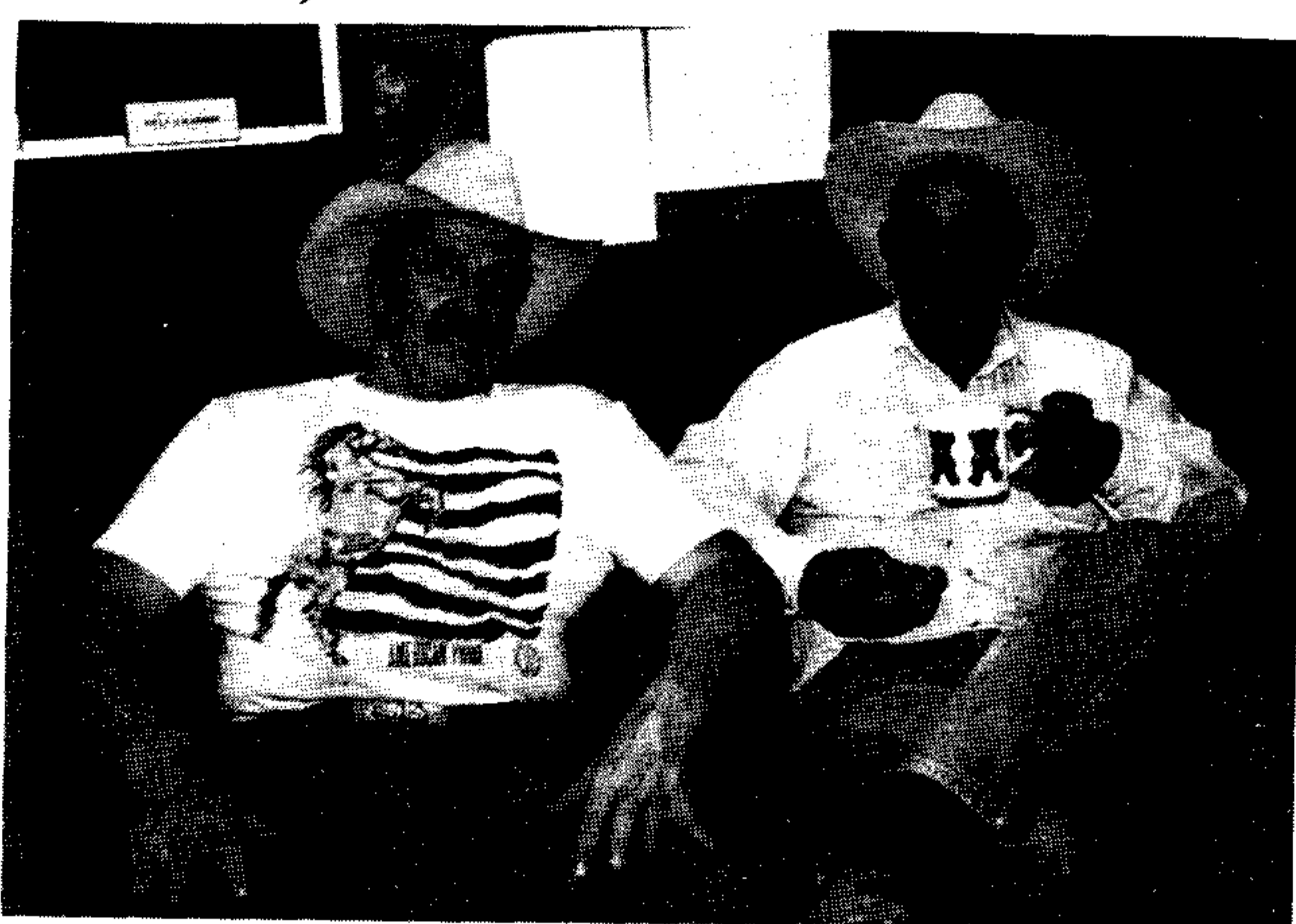


STAFF
and
MEMBERS
CORNER



*BESS AND BETTY
(WORKING ON TRAIL TALES)*

LIVERY MANAGER RON CLAYTON HAS HAD A CHALLENGING YEAR.. WHAT WITH THE CLOSURES OF BOTH THE KAIBAB AND BRIGHT ANGEL TRAILS AT VARIOUS TIMES OWING TO LANDSLIDES AND ROCK FALLS.



FOUNDERS OF THE G.C.P. & V. BETTY L. BARTLETT AND JANE "BOO" VERKAMP PRITCHETT ENJOYED A GET-TOGETHER, BOTH IN FLAGSTAFF AND AT THE GRAND CANYON (in August). "Boo" is teaching Journalism at the University of Idaho. Look out for many exciting projects!!!

BLACKSMITH MITCH DEVILLE AND WRANGLER BUD DUNAGAN TAKE A BREAK AT THE MULE BARN. MITCH'S WIFE PHYLLIS AND BUD'S DAUGHTER PATTY ARE LADY WRANGLERS.

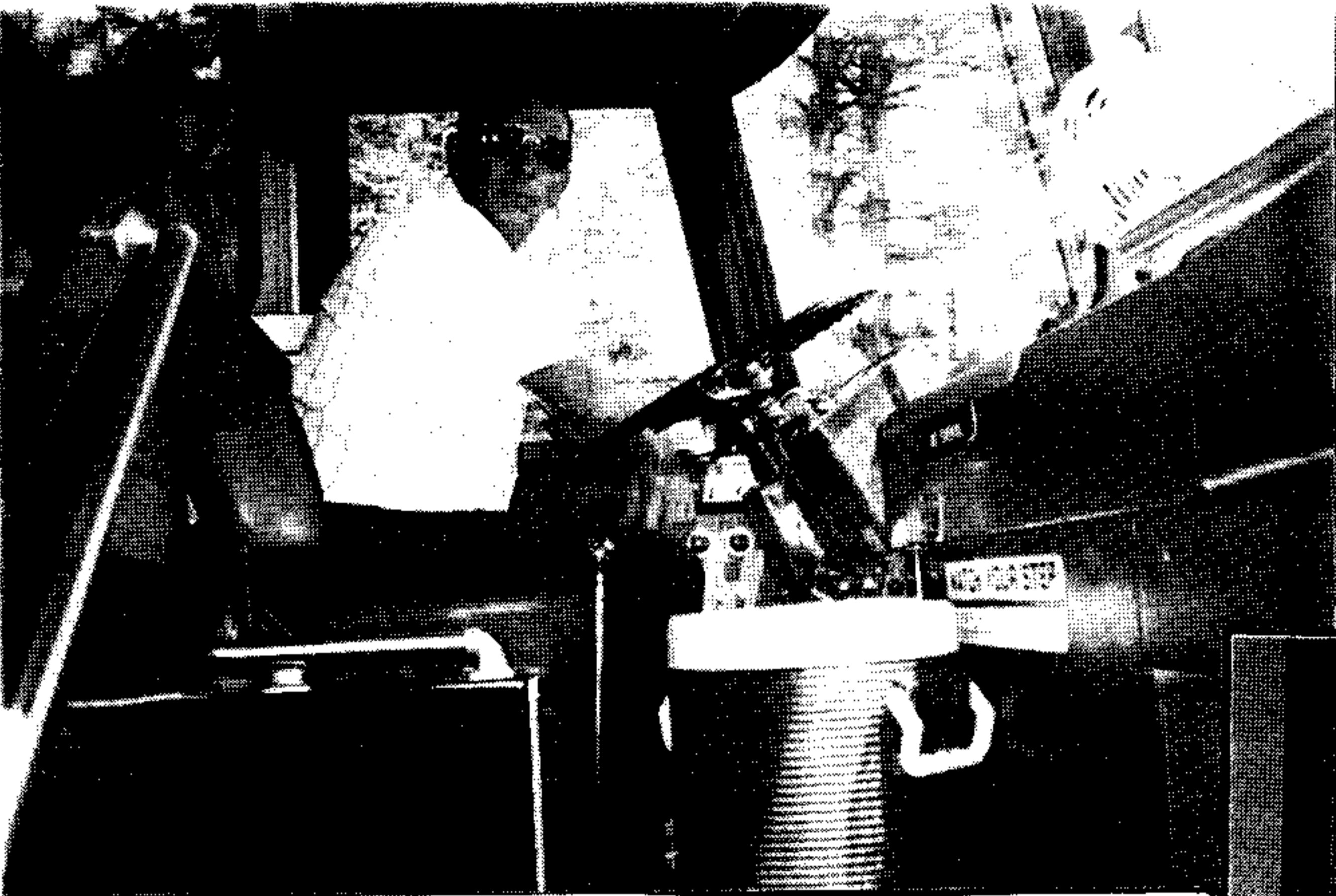


THE KENTS, JEANNIE AND GERRY, WILL BE RETIRING FROM VERKAMPS THIS FALL AND RETURNING TO FLAGSTAFF.



JOANN SALAZAR HAS BEEN WORKING AT RABBITTS ART GALLERY IN TUSAYAN. THIS VIVACIOUS AND TALENTED LADY HAS BEEN ADDED TO THE G.C.P. & V. SPEAKERS BUREAU.

CONGRATULATIONS
 TO PAT
 ON HIS RETIREMENT
 FROM N.A.U.
 AFTER 27 YEARS



PAT SNOW AT THE WHEEL OF NAU'S BIG TOUR BUS. DURING HIS TENURE AT THE UNIVERSITY, PAT DROVE A VARIETY OF VEHICLES AND WAS KNOWN FOR HIS MECHANICAL SKILLS. BUT STUDENTS, STAFF, AND FACULTY WILL ALWAYS REMEMBER HIM FOR THE ENJOYABLE "FIELD TRIPS" (Geology, Botany, Nursing, Music, Athletics and on and on...)

Thank you Pat!!
[Signature]



PAT AND HIS WIFE BONNIE LOOK OVER A SPECIAL APPRECIATION "DIPLOMA" FROM THE ELDERHOSTEL PROGRAM AT NAU.

PAT DROVE THE NAU BUS FOR MANY OF THE ELDERHOSTEL TRIPS TO THE GRAND CANYON AND TO THE HOPI AND NAVAJO RESERVATIONS. PAT WAS ESPECIALLY GOOD WITH THESE RETIRED FOLKS. HE WAS HELPFUL AND CONSIDERATE.



THE HEARTY NEW ZEALANDERS ON THE UPPER PORTION OF THE BRIGHT ANGEL TRAIL



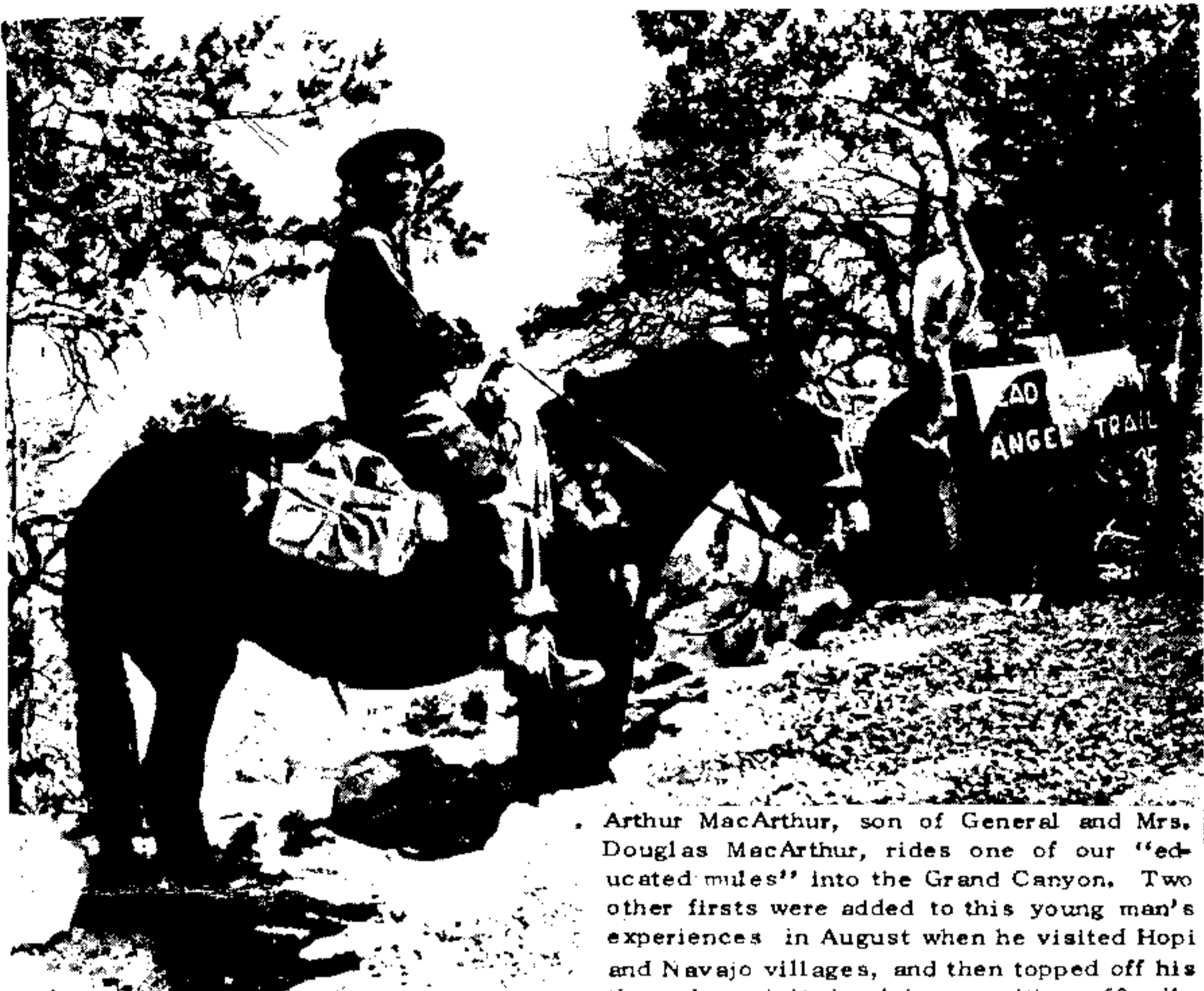
NAU ELDER HOSTEL

ONE OF THE POPULAR PARTS OF THE ELDERHOSTEL PROGRAM AT NORTHERN ARIZONA UNIVERSITY WAS (AND IS) THE FIELD TRIP TO THE GRAND CANYON. THE GROUPS SPEND THE DAY EXPLORING AND ENJOYING THIS MAGNIFICENT NATURAL WONDER. IN OCT. 1990 (see photo) THE PROGRAM ENTERTAINED FORTY DELIGHTFUL PEOPLE FROM NEW ZEALAND, WHO WERE JOINED BY FORTY FROM ALL OVER THE U.S. AND CANADA. THE FOLKS WERE COMBINED IN TWO GROUPS WHICH MADE TWO SEPARATE TRIPS TO THE CANYON. A GREAT TIME WAS HAD BY ALL.

(Photos by Betsy L. Bartlett)



Out Of The Past



Arthur MacArthur, son of General and Mrs. Douglas MacArthur, rides one of our "educated mules" into the Grand Canyon. Two other firsts were added to this young man's experiences in August when he visited Hopi and Navajo villages, and then topped off his three-day visit in Arizona with a 60-mile ride on a Diesel locomotive from Grand Canyon village to Williams.

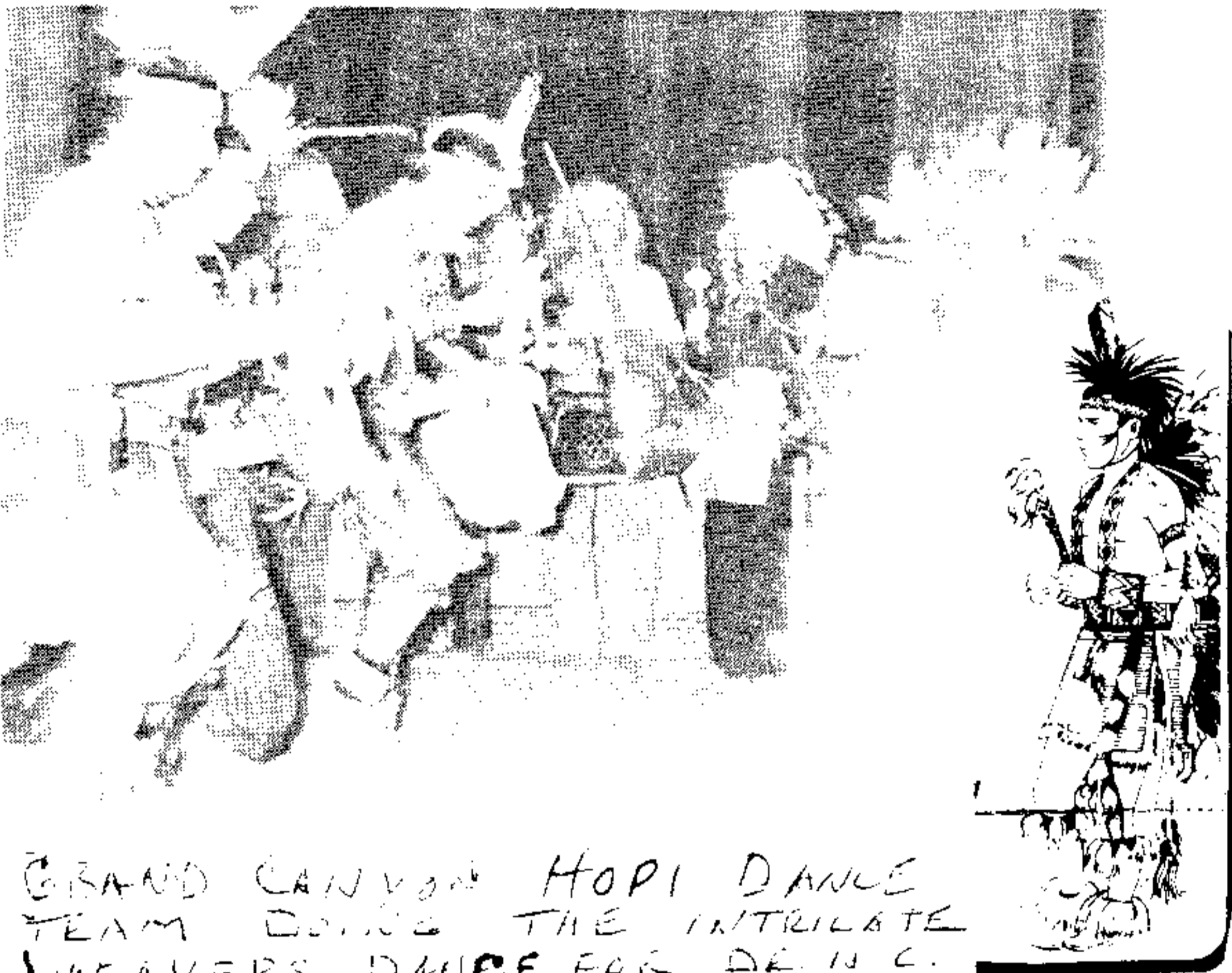
HOSPITALITY 1950's



Arturo Toscanini and Mrs. Toscanini Marvel at the Wonders of the Grand Canyon as the Conductor Takes a Vacation from His Duties with the NBC Symphony

MUSICAL AMERICA JAN. 1940

Wide World

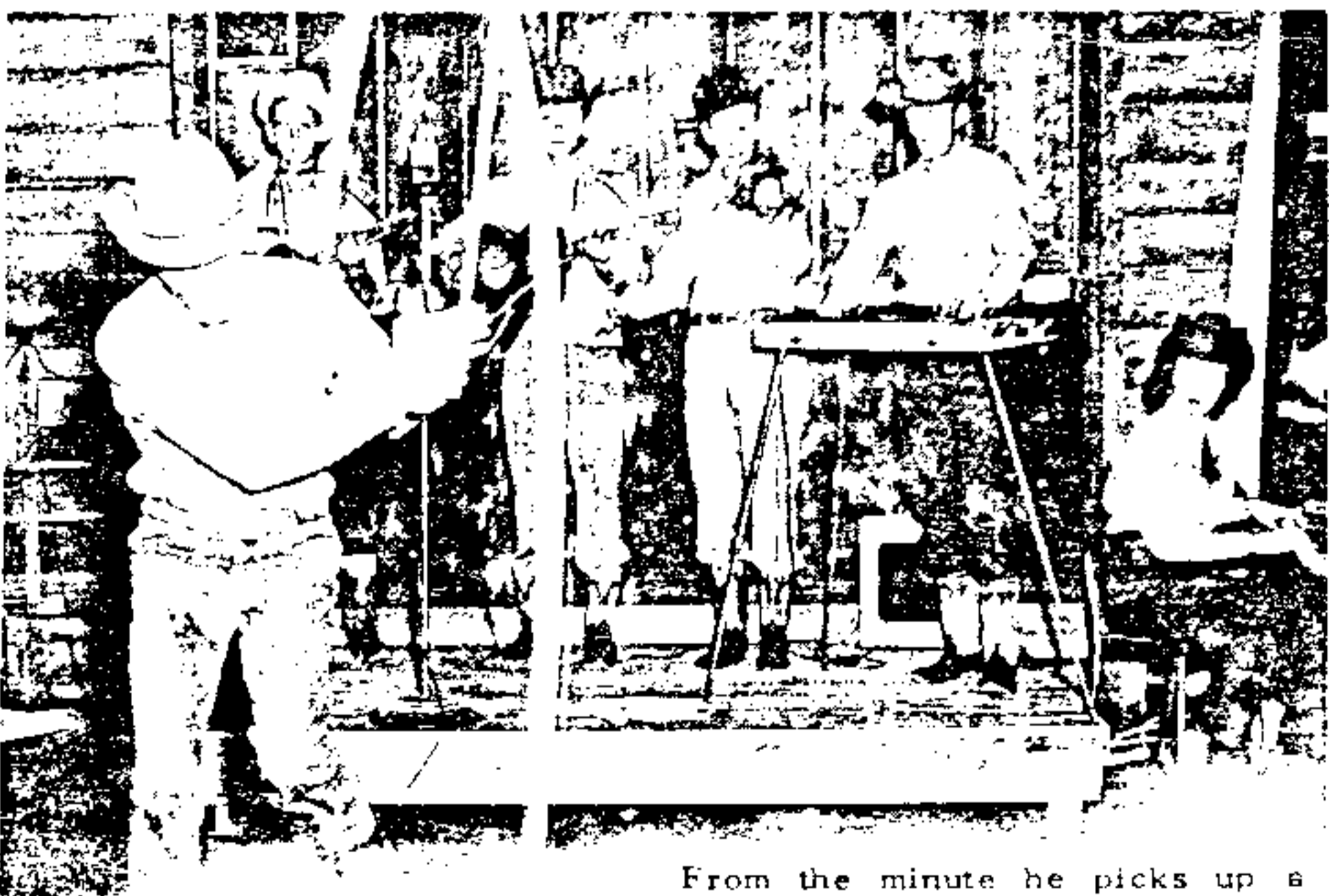


GRAND CANYON HOPI DANCE TEAM DOING THE INTRICATE WEAVERS' DANCE FOR DR. H. C. BRYANTS' RETIREMENT PARTY MARCH 1954 (PHOTO BY B.L. BARTLETT)



Sir Adrian Boult, distinguished musical director of the London (England) Philharmonic Orchestra, views a favorite spot on Bright Angel Trail at the Canyon from the rock wall on the rim. Enroute home from concerts in New York and Hollywood, Sir Adrian and Lady Boult spent two days visiting at Grand Canyon.

HOSPITALITY 1950's



From the minute he picks up a rope at Bright Angel's summer evening shows at Grand Canyon, Guide John McLaughlin puts on some good entertainment. That is, if you give him enough rope. Here he goes into his act, spinning one rope. Before it's over, he'll have five ropes twirling — one in his teeth, one in each hand, and two attached in the vicinity of his hip pockets. Providing musical background are Roger Miller (left), Don Corley, Trammell Bowman, Alfred Holley and Jeanette Kupka. (Virgil Gipson photo.)

B.A. LODGE
LOUNGE
1950's
HOSPITALITY



Student members of the Concert Association pose with Nadine Conner, star of the Metropolitan Opera Co., TV, and radio. A.S.C. FLAGSTAFF

GRAND CANYON J.R. + H.E.
STUDENTS 1957
(PHOTO BY B.L. BARTLETT)

Pool Is On Brink Of Grand Canyon

GRAND CANYON — This summer the Grand Canyon community has a swimming pool and a uranium mine, both firsts for this popular vacation spot on the South Rim.

Situated on the very brink of the Canyon, the swimming pool was built by Grand Canyon Inn, Inc., an independently owned organization which operates a hotel, dining room, and cocktail lounge. The company head is William D. Grant, formerly of Southern California. Also associated with him as resident manager is Dave S. Barrington.

Grand Canyon Inn site is a 20 acre patented tract of land 2½ miles west of Grand Canyon Village. Today it is the only remaining privately owned land on the canyon rim. All other frontage and surrounding areas have been acquired over the years by the federal government and are administered by the National Park Service.

While the inn facilities have been going some years now, general improvement and renovation has been made this season, with the new swimming pool as the major addition. Water for the pool comes in by train from Williams, and is transported by tank truck from the village to the inn. Latest purification equipment is used.

Guests at the inn are privileged to use the pool, and a swimming club, composed of village residents, has also been formed so that they, too, may use the pool in off hours.

Originally staked out as the Orphan Lodge mining claim in the 1890s by Daniel Hogan of Flagstaff, the now Grand Canyon Inn property achieved the status of patented land when President Theodore Roosevelt signed a deed for Hogan in the early 1900s. It was a personal favor granted Hogan, who was one of Roosevelt's Rough Riders in the Spanish-American War.

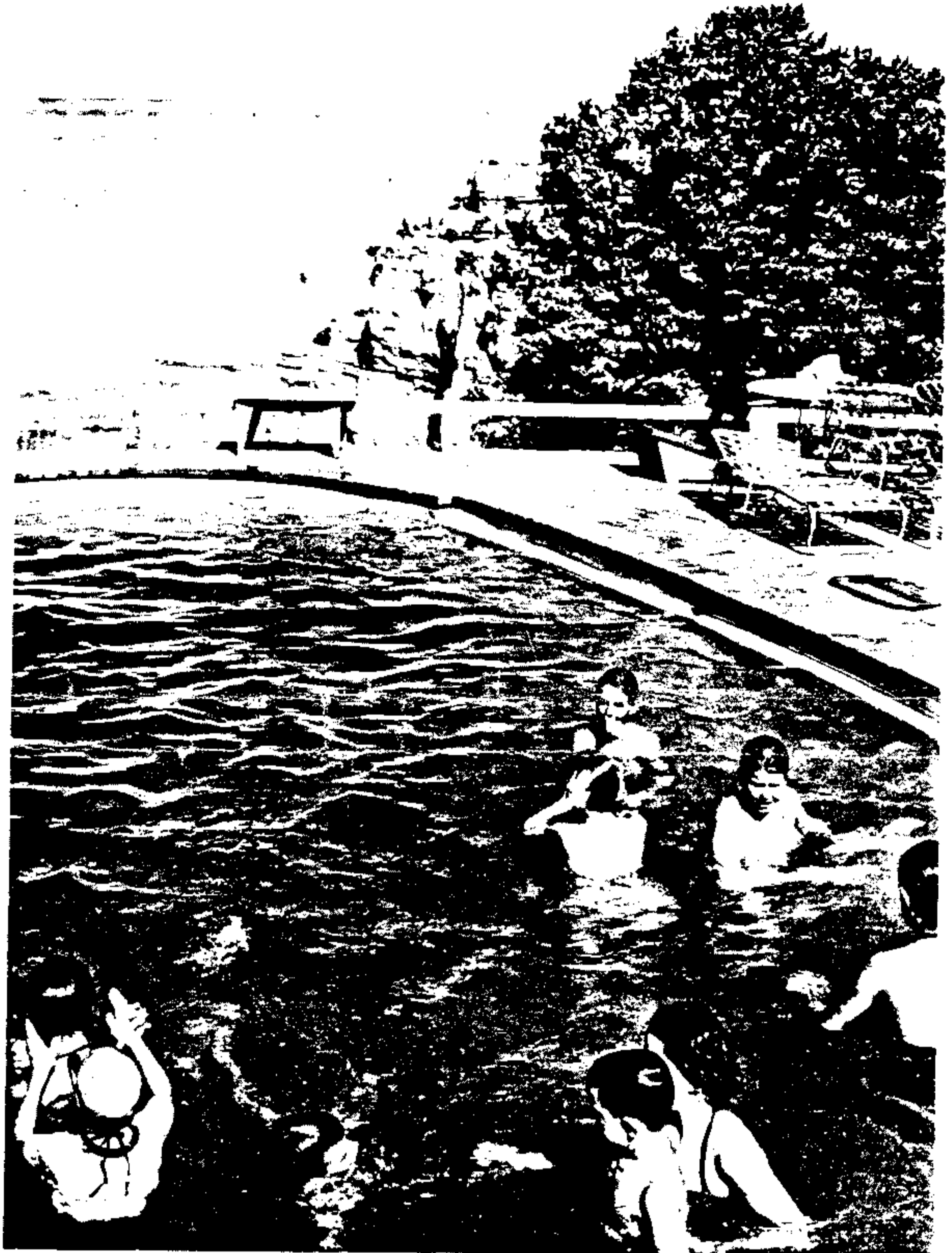
Hogan discontinued his copper mining operations below the rim some time after the National Park Service took over the Grand Canyon area in 1916. Last year, however, samples of ore were taken from a small area near the old mine and assays revealed the presence of high grade uranium ore and considerable tonnage was indicated by a limited study at the site. Shortly afterward an agreement was concluded for development and production of the uranium between Golden Crown Mining Company of Arizona and the Grand Canyon Inn, Inc.

Because of the difficulty of its natural access, it has been possible to prospect only a very small portion of the "orphan" and elaborate installations are planned to permit exploration and production. Surface facilities have already been completed on the surface at the rim. A temporary cable-way is now being installed by means of which the permanent tramway will be built for a length of about 2,000 feet. It is expected that tourists visiting the Grand Canyon Inn will be able to observe the operation of hoisting uranium ore out of the Canyon via this tram by mid-summer.

YES
FOLKS
THERE
WAS
A POOL
ON
THE
SOUTH
RIM!

1950's

GRAND CANYON SCHOOLS STUDENTS
ENJOY A SWIM!



GRAND CANYON INN

Grand Canyon, Arizona

Lodging

Dining Room

Swimming Pool



PRESENT STATUS OF THE PROPERTY
WHICH IS NOW UNDER THE NATIONAL
PARK SERVICE. (NOTE MINE SHAFT)

SPECIAL TRIBUTE TO DR. AGNES M. ALLEN WHO WAS 91 IN JULY!



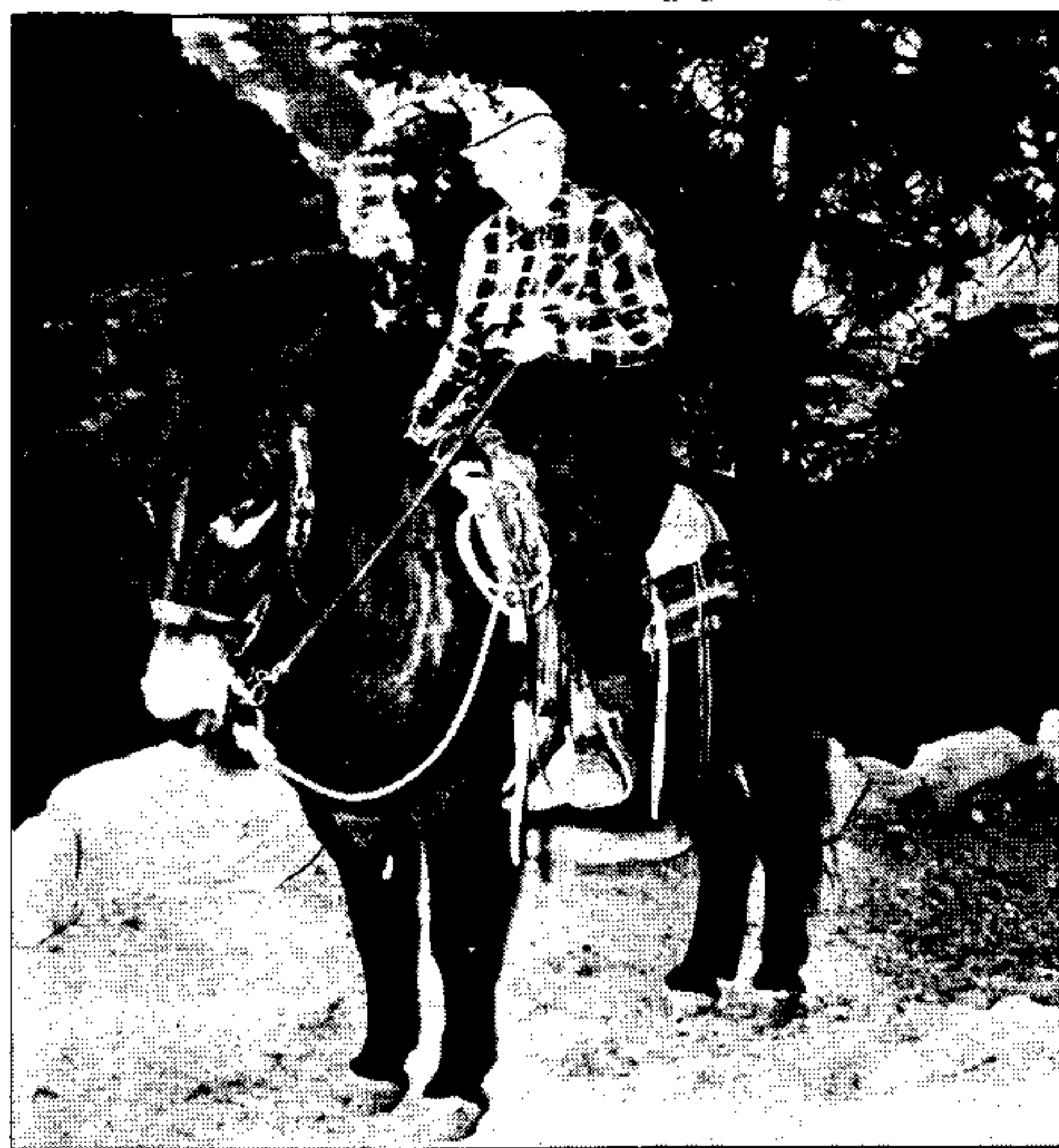
ON THE KAIBAB TRAIL! DR. ALLEN EXPLAINS THE WONDER OF EARTH HISTORY (April 1952, PHOTO BY H. COOPER)



WEARY GEOLOGY STUDENTS REST UNDER AN APPROPRIATE SIGN!! (APRIL 1952 - PHOTO BY NETTY COOPER)



MEMBERS OF THE NAVY V-12 PROGRAM WITH DR. ALLEN AT PHANTOM RANCH 1942 (A.M. ALLEN COLLECTION)



Agnes Allen is pictured here in 1953 during her 20th excursion in the Grand Canyon, where she guided about 400 NAU students and traveled more than 400 miles on foot and on mule back. (FRED HARVEY PHOTO)

"Agnes Allen involved her students emotionally and intellectually with the subject matter of the class," said Betty Bartlett, Allen's former student and lab assistant during the 1950s.

"She made students care, be responsible for, and appreciate their environment. Dr. Allen encouraged students to see things from a new perspective and to be aware of the world around them," Bartlett added.

Eventually, the enthusiastic professor was decorated for her dedication to conservation of the environment.

In 1972, the U.S. Department of Interior presented Allen with its highest honor, the Conservation Service Award, citing her teaching and inspiration of young people to enter careers in public land administration.

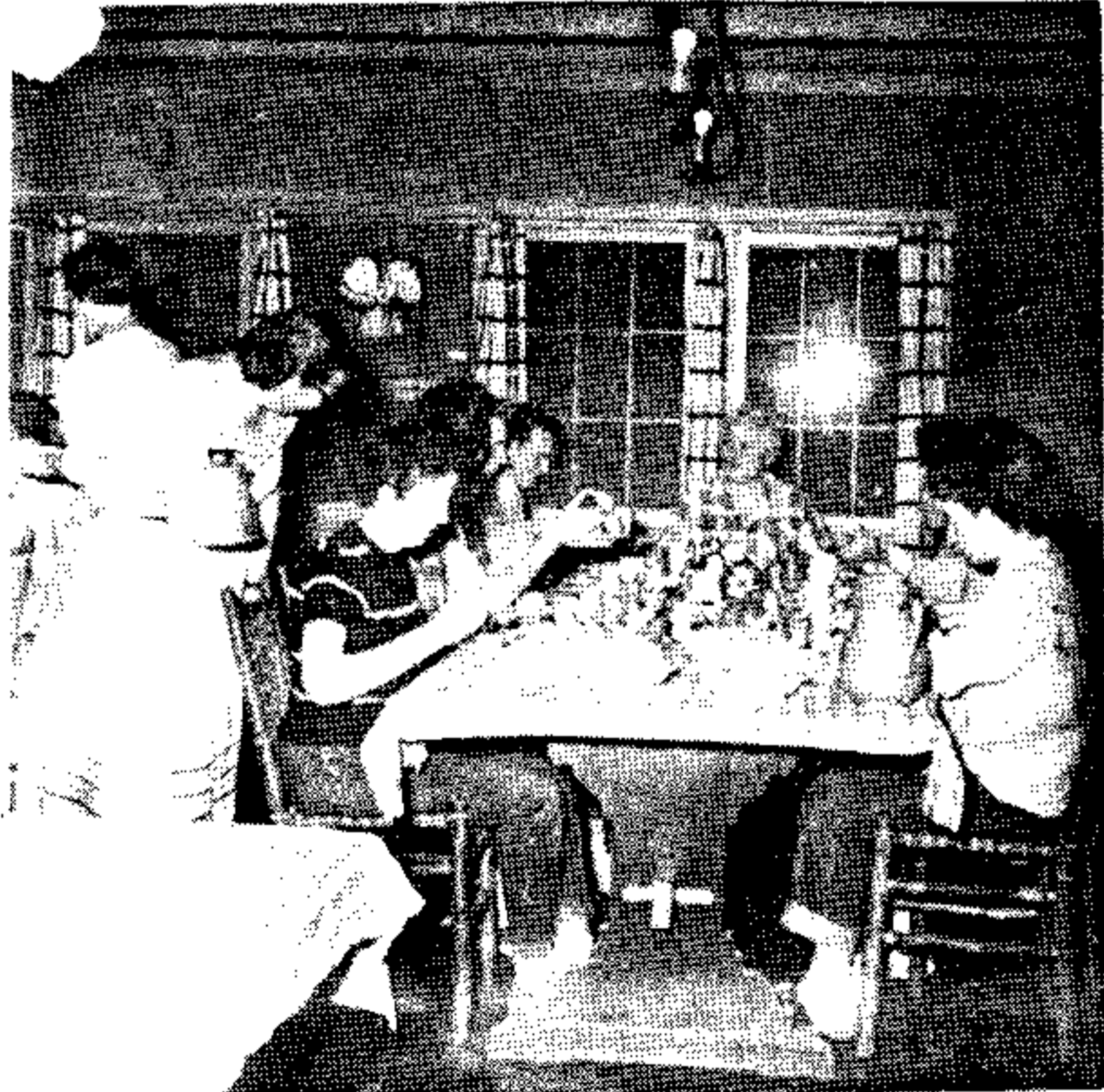
Many of Allen's students pursued successful careers in the department, and among them was former U.S. Secretary of the Interior Russ Dickenson.

During Allen's administrative career, she headed the science department from 1947 until 1959 when she became director of the division of science and mathematics. During 1955-56, Allen also served as acting dean of women, and in 1966 she was dean of the College of Arts and Science.

"Dr. Allen shared her enthusiasm for teaching with other professors and, of course, her students. She was a team player and a true friend to the people she worked with," Bartlett explained.

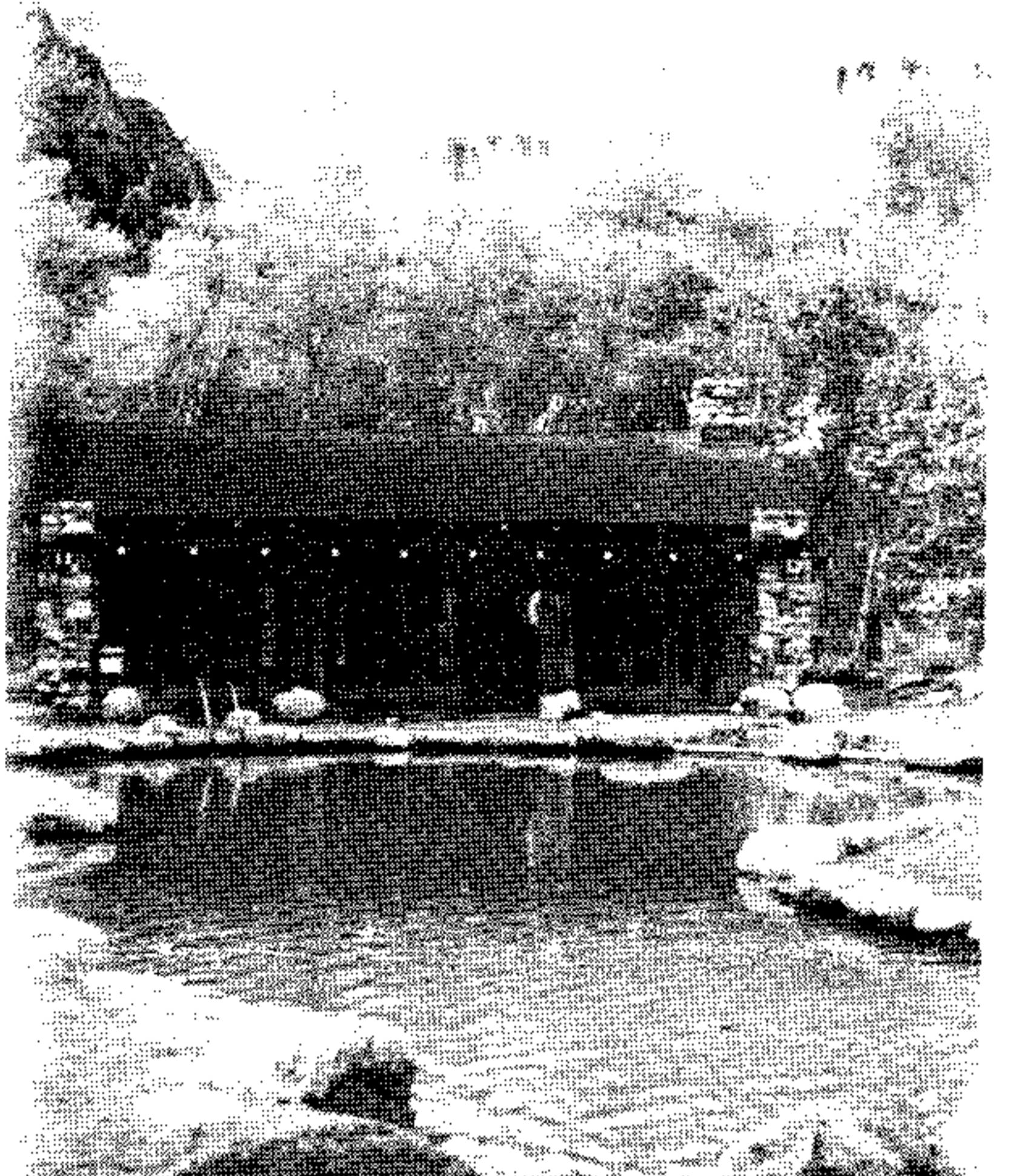
According to Bartlett, Allen's role as a university administrator and her many leadership positions with the American Association of University Women contributed to a favorable environment for women in general at NAU.

(SPRING 1956 PHOTO BY B.L.B.)



CHOW DOWN AT PHANTOM RANCH.

PHANTOM RANCH POOL



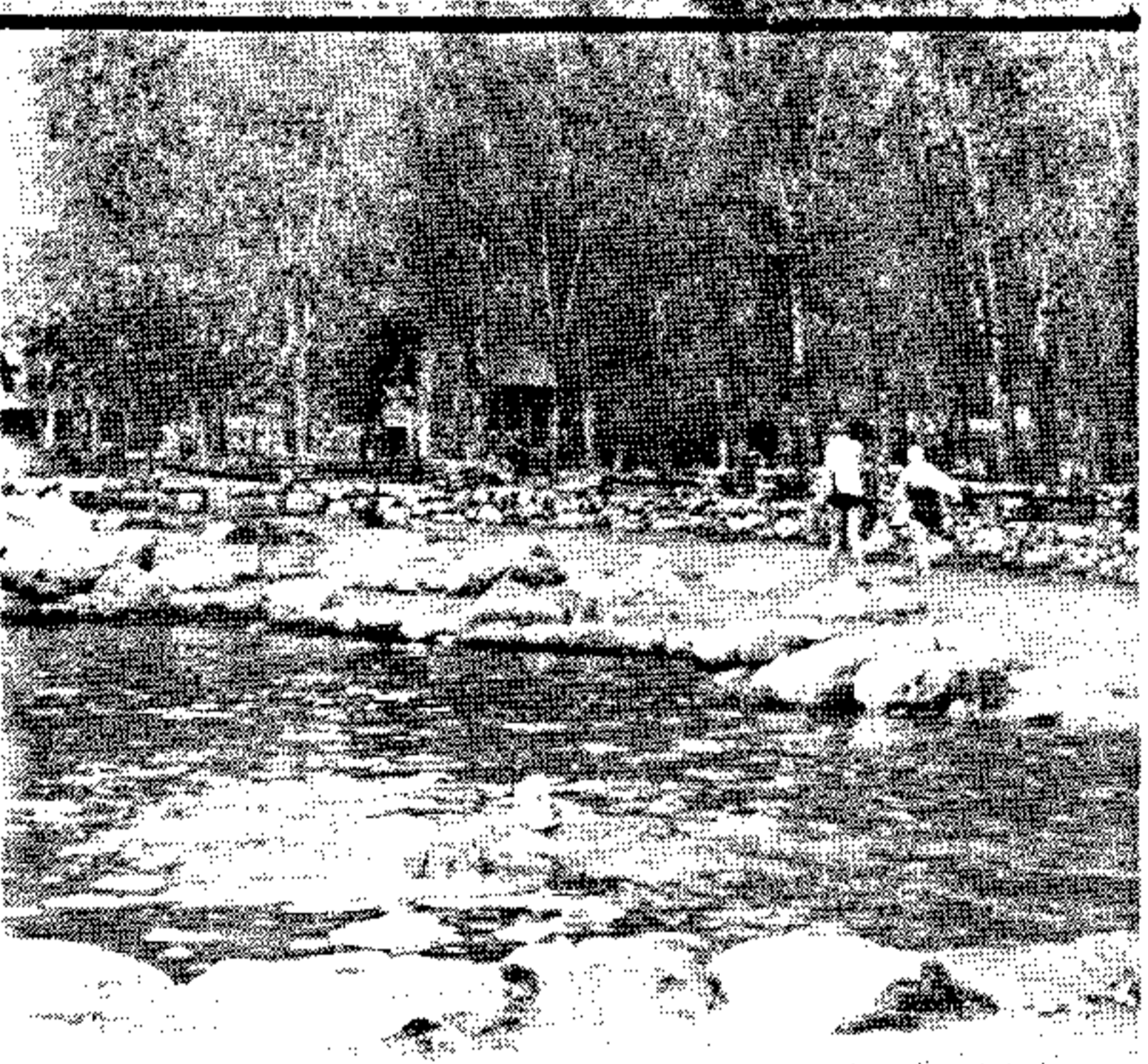
1950's PHOTO BY B. BARTLETT

GEOLOGY CLASS "TOPS OUT" ON A VERY WET APRIL DAY! BELOW, GEOLOGY CLASS POSES BEFORE HEADING UP THE TRAIL

KOLB BROS. PHOTO

April 1952

A
COOL
DIP
—
Spring
1952
PHOTO
BY
Bartlett



APRIL 1952 - PHOTO BY HARRY COOPER



FROM →
TRAIL
TALES

by Betty L.



Commentary *By BETTY BARTLETT EDITOR*

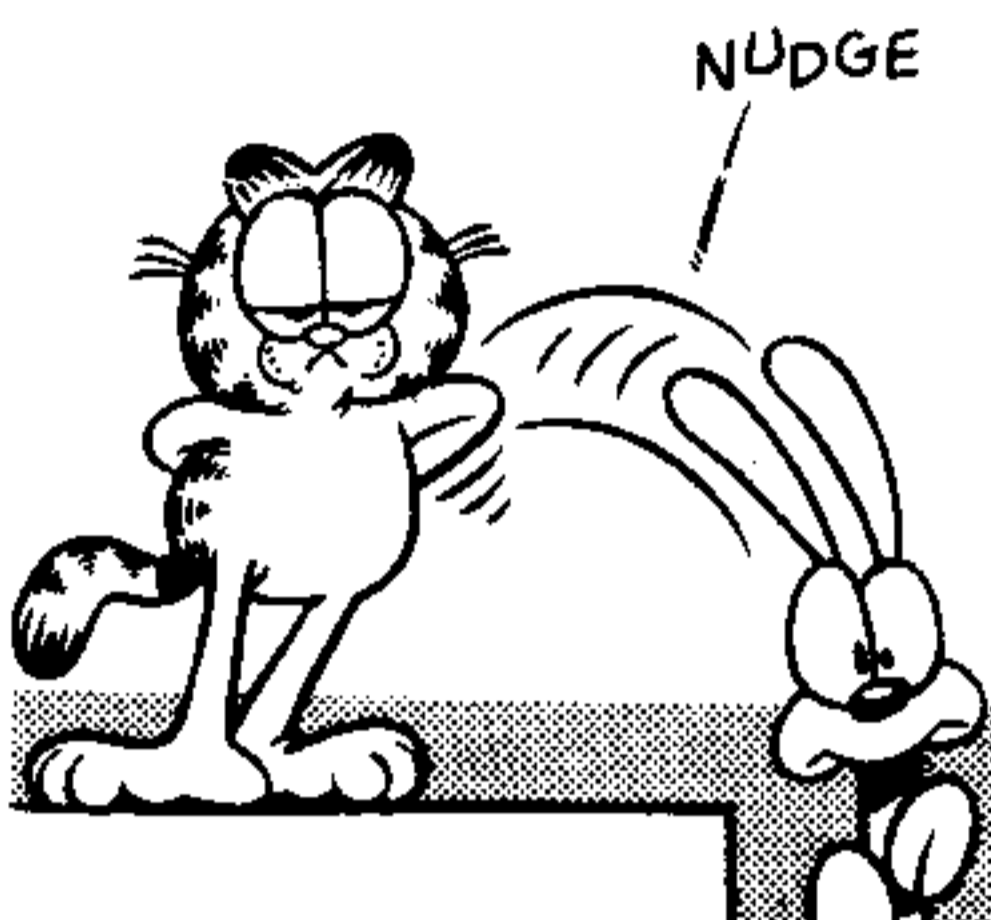
RIMMIN' is back in production again! The plan is to have two big issues a year (Spring-Summer and Fall-Winter) with special announcements in between for Grand Canyon P. & V. Activities and Projects. We were going to have some info about the recent Earthquakes and Landslides at the Canyon, but there is so much material involved that a special report has been prepared (see below).

This issue is dedicated to the memory of my mother, Thelma Bartlett, who was known as little mom and mamacita to her friends at Grand Canyon. She was so appreciative of the kindnesses extended to her these past several years by the folks at the Canyon. Her big thrill was the buggy ride. Thanks to the Fred Harvey Trans. Dept. especially.

Also, a special tribute to Dr. Agnes M. Allen and to Pat Snow. I had the pleasure of working with both these wonderful people. Way back when with Dr. Allen as her Geology Lab Assistant — and the past four years with Pat and the Elderhostels.

GARFIELD by Jim Davis

SMILE
A WHILE



THE FAMILY CIRCUS By Bil Keane



DON'T DELAY . . . JOIN TODAY!



GRAND CANYON PIONEERS and VILLAGERS

P.O. BOX 1122, FLAGSTAFF, ARIZONA 86002, U.S.A.

NAME _____

ADDRESS _____

CONNECTION AT GRAND CANYON (IF ANY) _____

RATES \$12.50 annual U.S.A.
\$20.00 Foreign
\$125.00 LIFE MEMBER
(Make checks payable to G.C.P.& V.)
AMOUNT ENCLOSED _____

SPECIAL PUBLICATIONS FROM G.C.P.& V. USE ORDER BLANK BELOW AND SEND TO ABOVE ADDRESS *****

QUANTITY	NAME OF ITEM	COST	AMOUNT
	Complete Program & Activities of the G.C.P.&V. (Self-Addressed Stamped En)		
	Earth-Shaking Events at Grand Canyon	\$ 4.95	
	The Little Orphan Mine (Geology etc. all)	\$ 2.95	

(Postage included in price) TOTAL _____